

# EAP-TLS Migration Check List

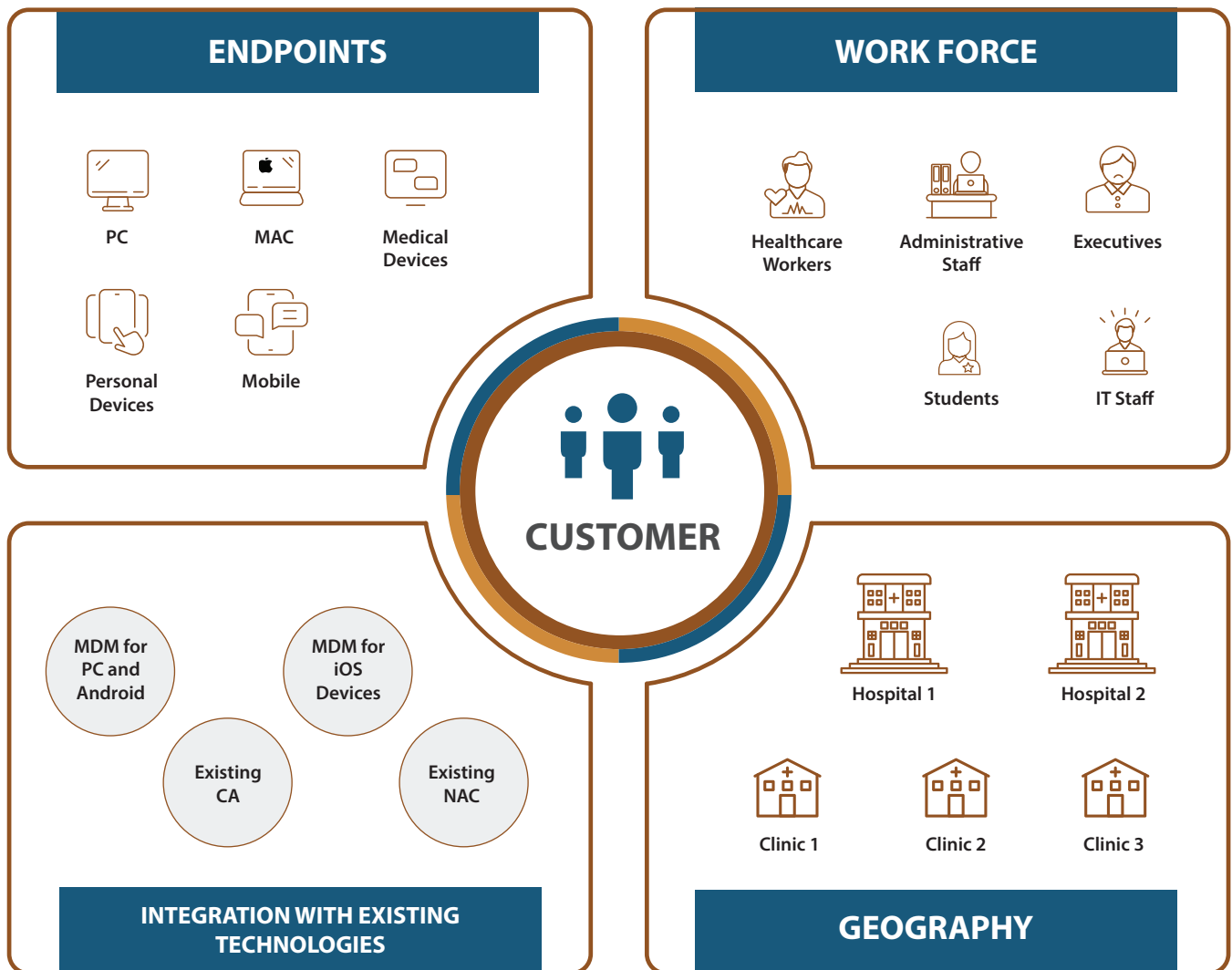
Migration to EAP-TLS is a major undertaking. This document goes over important questions to ask for a successful migration.

**August 6<sup>th</sup>, 2024**



## Introduction

Migration from PKS or EAP-PEAP MSCHAPv2 is more than just changing a configuration option on your wireless infrastructure. It requires additional infrastructure. A Public Key Infrastructure (PKI) and Network Access Control (NAC) are required in most cases. Business and technical requirements must be carefully evaluated before purchasing a product or solution. Below find few questions that will help you better prepare for your migration to EAP-TLS.



### **Do you currently use a NAC solution for wired or wireless access?**

Network Access Control solution provides granular access control to network resources based on several factors such as user identity, role, device and location. NAC solutions often comes with a built-in PKI infrastructure and also provides functionality for bringing in BYOD and Guest access. If you are currently using a NAC solution, you want evaluate the current features, functionalities and licenses you purchased.

### **What is your current wireless solution?**

All major wireless vendors support EAP-TLS authentication. Make sure your wireless vendor, PKI solution and NAC solution can all work together and meets the onboarding and offboarding workflow.

### **Do you allow BYOD devices to join corporate network other than Guest Network?**

If your company allows BYOD and guest devices on the network, it must be carefully taken into consideration. The workflow for onboarding and corporate devices, BYOD devices and guest devices can have very different workflow. Each one must be tested and validated separately to meet the business requirement as well as security need.

### **Do you have a lot of IoT devices in your network connected over wireless?**

Most IoT devices are connected over wireless. Some IoT devices can be critical to business functions. The role of IoT devices, their capability for EAP-TLS authentication must be validated.

### **Do you have devices such as infusion pumps or heartbeat monitor that currently use PSK as authentication mechanism?**

If you are a healthcare provider, you most likely will have one or more medical devices that are wireless. Often these devices can be headless devices and may not support EAP-TLS authentication. Make sure you have a complete inventory of these devices so that you can address how to securely connect the devices.

### **How many SSIDs you currently have in your network?**

Some customers use additional SSIDs as a way of segmenting the network. This can actually degrade network performance. Instead, a NAC solution with right policies should be used to segment the network. If you have multiple SSIDs, you must carefully evaluate the purpose of each SSID and how to migrate them to the new environment with the right policies.

### **What is your current identity solution?**

Your identity solution plays an important role when migrating to EAP-TLS. Make sure your identity solution works well with the NAC solution and PKI solution.

### **Do you currently use an MDM solution?**

If you are using an MDM solution, you may be able to leverage some aspects of the solution for provisioning.

### **How many physical locations do you have?**

The number of physical locations and size of each location must be carefully considered for redundancy and business continuity in case of a failure of any components.

### **How much of your workforce is tech savvy?**

Migrating to EAP-TLS may require some training for end users. If large part of your workforce is not tech savvy you may want to consider some training as part of your migration plan.

# It is time to put Consltek's Fully Managed or Co-Managed services to work for you



**Round-the-Clock  
IT support**



**Expertise and  
scalability**



**Flexible Service where and  
when you need it**



**Aligning technology with  
business goals**



**Dedicated team of  
experts**



**Top-level  
support**



**Predictable  
monthly costs**



**Cost  
optimization**

Connect with us today and unlock the true power of your IT investments:  
<https://consltek.com/connect>



## Headquarters

2010 Crow Canyon Pl Ste 100, San Ramon, CA-94583

## Technology Center

18, 4th 'C' Cross, 1st, Main Road, Koramangala Industrial Layout, 5th Block,  
Bengaluru, Karnataka 560095

## Contact

Phone: 1-925-233-3366

E-mail: [sales@consltek.com](mailto:sales@consltek.com) | <https://www.consltek.com>